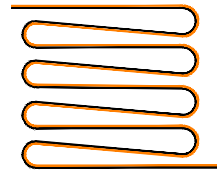
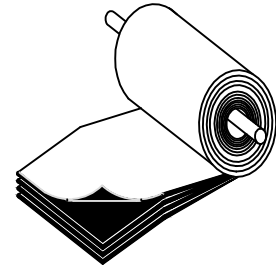
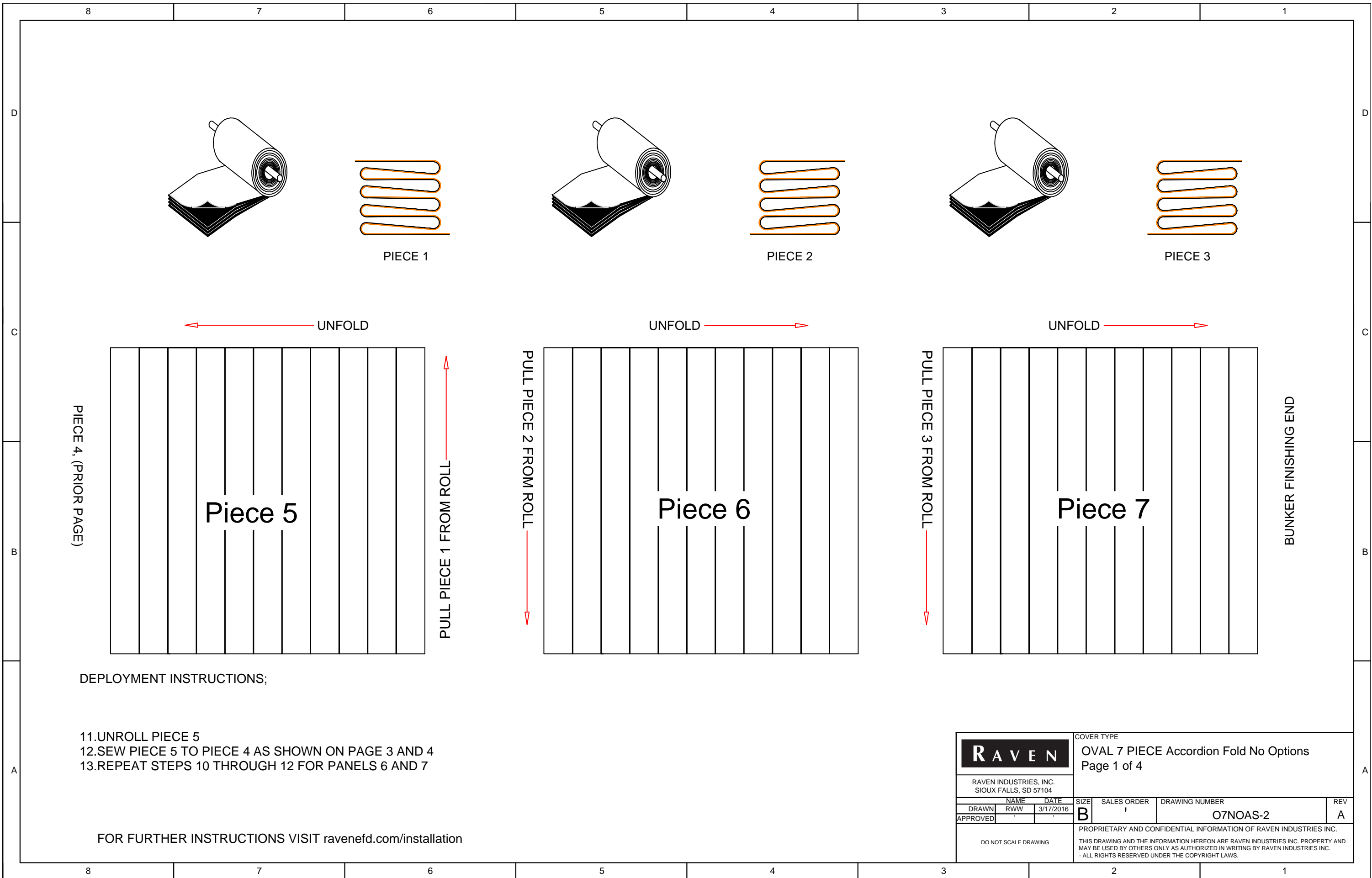


**DEPLOYMENT INSTRUCTIONS;**

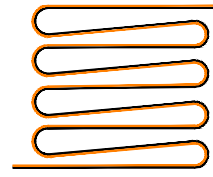
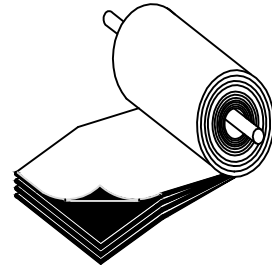
1. PULL PIECE 1 & 2 ACROSS THE GRAIN PILE ABOUT 1/7 OF THE WAY FROM THE STARTING END
2. SEW PANELS AS SHOWN ON PAGE 3
3. WHILE HOLDING PIECE 2, UNFOLD PIECE 1 TO THE STARING END OF THE BUNKER
4. UNFOLD PIECE 2
5. UNROLL PIECE 3
6. SEW PIECE 3 TO PIECE 2 AS SHOWN ON PAGE 3
7. UNFOLD PIECE 3
8. UNROLL PIECE 4
9. SEW PIECE 4 TO PIECE 3 AS SHOWN ON PAGE 3
10. UNFOLD PIECE 4

FOR FURTHER INSTRUCTIONS VISIT [ravenefd.com/installation](http://ravenefd.com/installation)

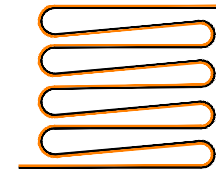
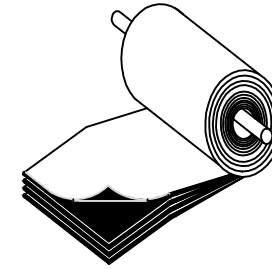
		COVER TYPE			
		OVAL 7 PIECE Accordion Folded No Options Page 1 of 4			
RAVEN INDUSTRIES, INC. SIOUX FALLS, SD 57104		SIZE	SALES ORDER	DRAWING NUMBER	REV
DRAWN	RWW	3/17/2016	B		A
APPROVED				O7NOAS-1	
DO NOT SCALE DRAWING		PROPRIETARY AND CONFIDENTIAL INFORMATION OF RAVEN INDUSTRIES INC. THIS DRAWING AND THE INFORMATION HEREON ARE RAVEN INDUSTRIES INC. PROPERTY AND MAY BE USED BY OTHERS ONLY AS AUTHORIZED IN WRITING BY RAVEN INDUSTRIES INC. - ALL RIGHTS RESERVED UNDER THE COPYRIGHT LAWS.			



PIECE 1



PIECE 2



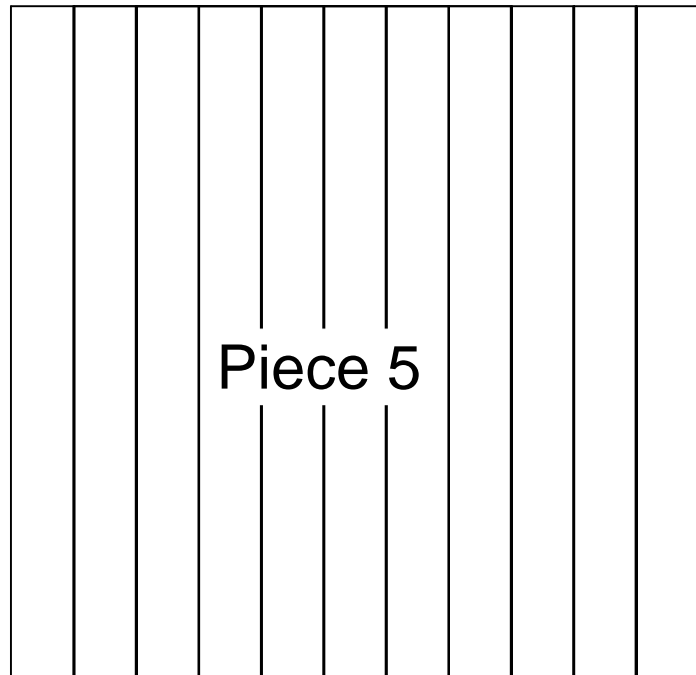
PIECE 3

← UNFOLD

UNFOLD →

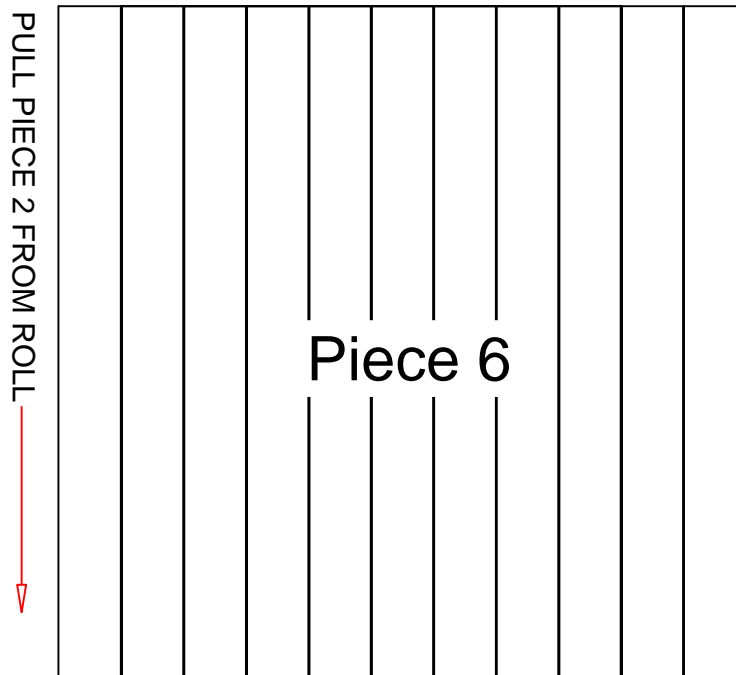
UNFOLD →

PIECE 4, (PRIOR PAGE)



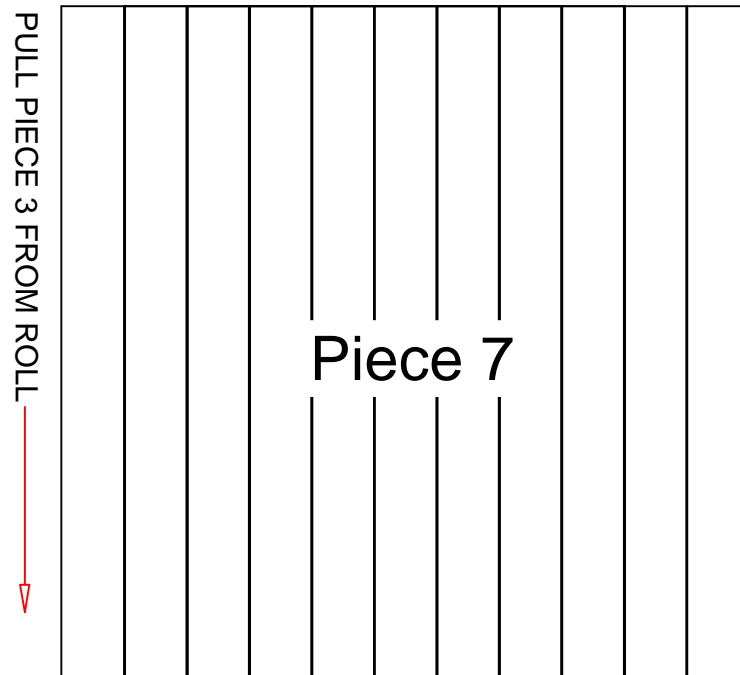
Piece 5

PULL PIECE 1 FROM ROLL ↑



Piece 6

PULL PIECE 2 FROM ROLL ↓



Piece 7

PULL PIECE 3 FROM ROLL ↓

BUNKER FINISHING END

DEPLOYMENT INSTRUCTIONS;

- 11.UNROLL PIECE 5
- 12.SEW PIECE 5 TO PIECE 4 AS SHOWN ON PAGE 3 AND 4
- 13.REPEAT STEPS 10 THROUGH 12 FOR PANELS 6 AND 7

FOR FURTHER INSTRUCTIONS VISIT [ravenefd.com/installation](http://ravenefd.com/installation)

		COVER TYPE			
		OVAL 7 PIECE Accordion Fold No Options Page 1 of 4			
RAVEN INDUSTRIES, INC. SIOUX FALLS, SD 57104		SIZE	SALES ORDER	DRAWING NUMBER	REV
DRAWN RWW	DATE 3/17/2016	B	1	07NOAS-2	A
APPROVED		PROPRIETARY AND CONFIDENTIAL INFORMATION OF RAVEN INDUSTRIES INC. THIS DRAWING AND THE INFORMATION HEREON ARE RAVEN INDUSTRIES INC. PROPERTY AND MAY BE USED BY OTHERS ONLY AS AUTHORIZED IN WRITING BY RAVEN INDUSTRIES INC. - ALL RIGHTS RESERVED UNDER THE COPYRIGHT LAWS.			
DO NOT SCALE DRAWING					

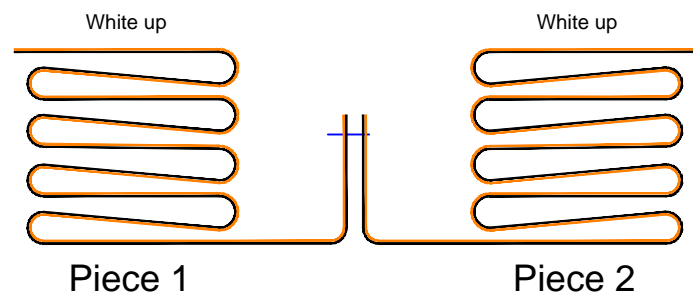


FIGURE 1

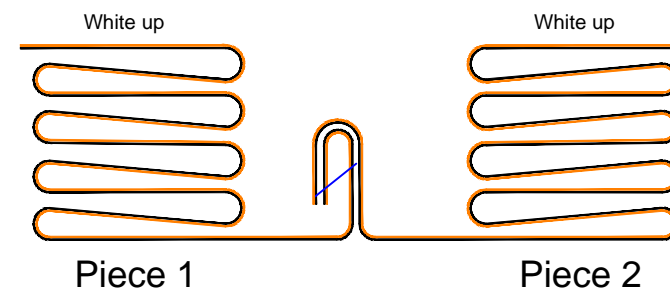


FIGURE 2

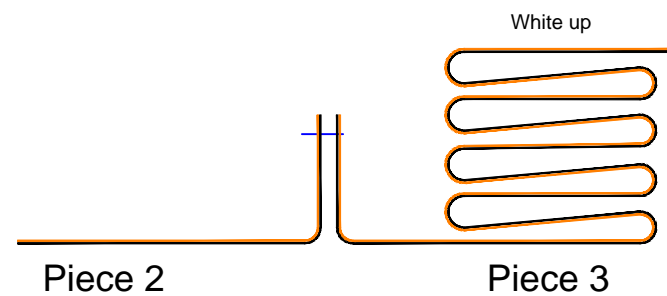


FIGURE 3

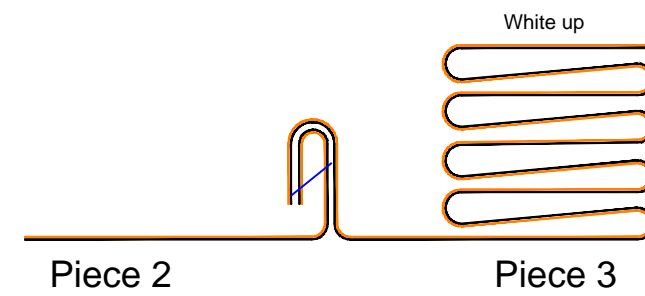

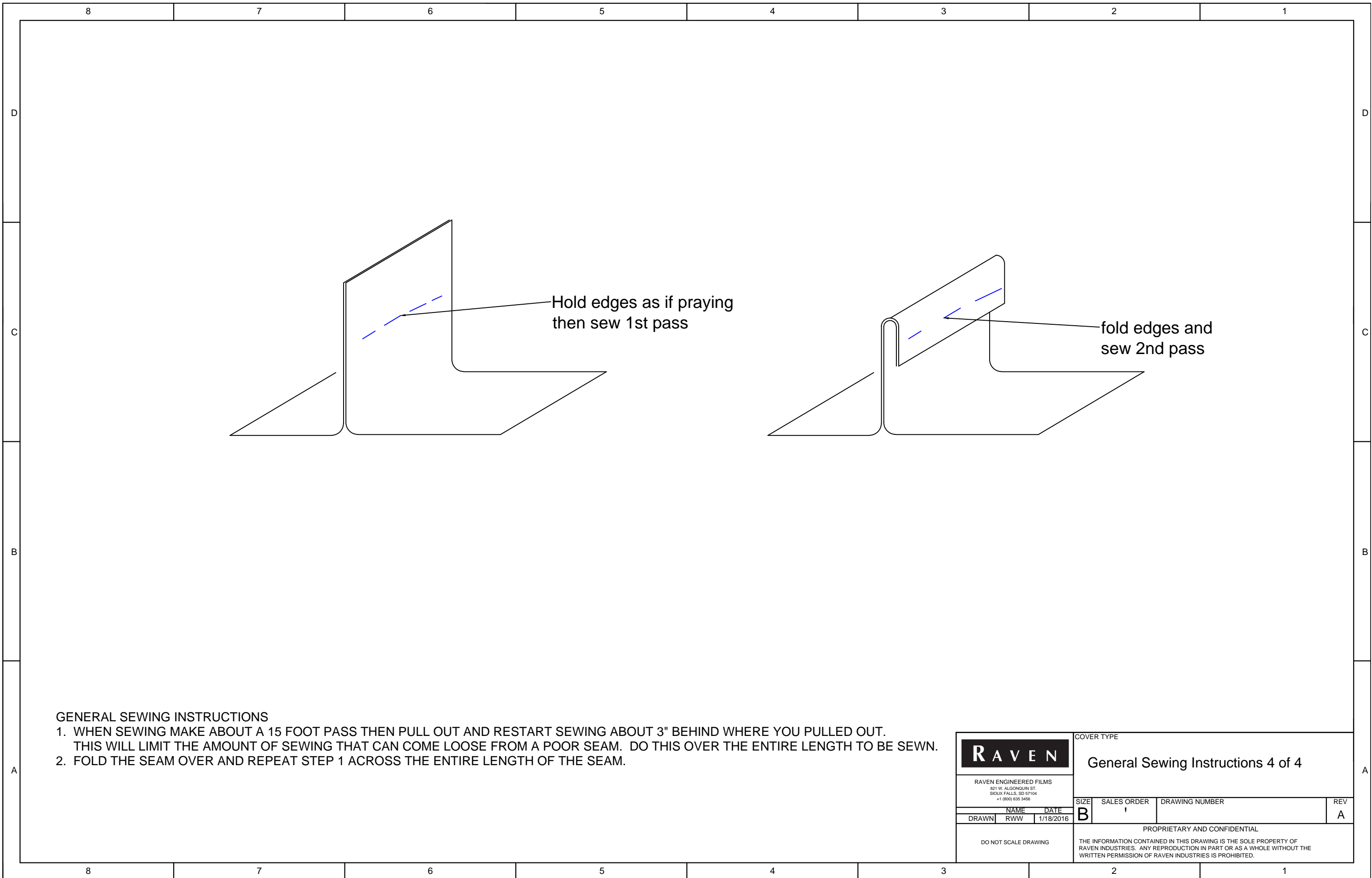


FIGURE 4

SEWING INSTRUCTIONS

1. ONCE FIRST AND SECOND PIECE ARE UNROLLED, BRING THE BOTTOM OF BOTH PIECES TOGETHER BLACK TO BLACK, (FIGURE1)
2. SEW ACROSS THE ENTIRE SEAM AS SHOWN IN THE GENERAL SEWING INSTRUCTIONS, (PAGE 4)
3. FOLD THE SEAM OVER AND SEW THE ENTIRE SEAM AS SHOWN IN THE GENERAL INSTRUCTIONS, (FIGURE 2)
4. ONCE PIECE 3 IS UNROLLED, BRING THE BOTTOM OF BOTH PIECES TOGETHER BLACK TO BLACK, (FIGURE 3)
5. SEW ACROSS THE ENTIRE SEAM AS SHOWN IN THE GENERAL SEWING INSTRUCTIONS, (PAGE 4)
6. FOLD THE SEAM OVER AND SEW THE ENTIRE SEAM AS SHOWN IN THE GENERAL INSTRUCTIONS, (FIGURE 4)
7. REPEAT STEPS 4 THROUGH 6 ABOVE FOR PIECE 4, 5, 6 AND 7  
FOR FURTHER INSTRUCTIONS VISIT [ravenefd.com/installation](http://ravenefd.com/installation)

 RAVEN ENGINEERED FILMS 821 W. ALGONQUIN ST. SIOUX FALLS, SD 57104 +1 (800) 635-3456		COVER TYPE		
		OVAL 7 PIECE Accordion Folded No Options Page 3 of 4		
DRAWN	NAME RWW	DATE 3/9/2016	SIZE B	SALES ORDER 1
			DRAWING NUMBER O7NOAS-3	REV A
PROPRIETARY AND CONFIDENTIAL				
DO NOT SCALE DRAWING				
THE INFORMATION CONTAINED IN THIS DRAWING IS THE SOLE PROPERTY OF RAVEN INDUSTRIES. ANY REPRODUCTION IN PART OR AS A WHOLE WITHOUT THE WRITTEN PERMISSION OF RAVEN INDUSTRIES IS PROHIBITED.				




Hold edges as if praying  
then sew 1st pass

fold edges and  
sew 2nd pass

**GENERAL SEWING INSTRUCTIONS**

1. WHEN SEWING MAKE ABOUT A 15 FOOT PASS THEN PULL OUT AND RESTART SEWING ABOUT 3" BEHIND WHERE YOU PULLED OUT. THIS WILL LIMIT THE AMOUNT OF SEWING THAT CAN COME LOOSE FROM A POOR SEAM. DO THIS OVER THE ENTIRE LENGTH TO BE SEWN.
2. FOLD THE SEAM OVER AND REPEAT STEP 1 ACROSS THE ENTIRE LENGTH OF THE SEAM.

		COVER TYPE			
		General Sewing Instructions 4 of 4			
<small>RAVEN ENGINEERED FILMS 821 W. ALGONQUIN ST. SIOUX FALLS, SD 57104 +1 (800) 635-3456</small>		SIZE	SALES ORDER	DRAWING NUMBER	REV
DRAWN	RWW	DATE	1/18/2016	B	A
DO NOT SCALE DRAWING		<small>PROPRIETARY AND CONFIDENTIAL THE INFORMATION CONTAINED IN THIS DRAWING IS THE SOLE PROPERTY OF RAVEN INDUSTRIES. ANY REPRODUCTION IN PART OR AS A WHOLE WITHOUT THE WRITTEN PERMISSION OF RAVEN INDUSTRIES IS PROHIBITED.</small>			